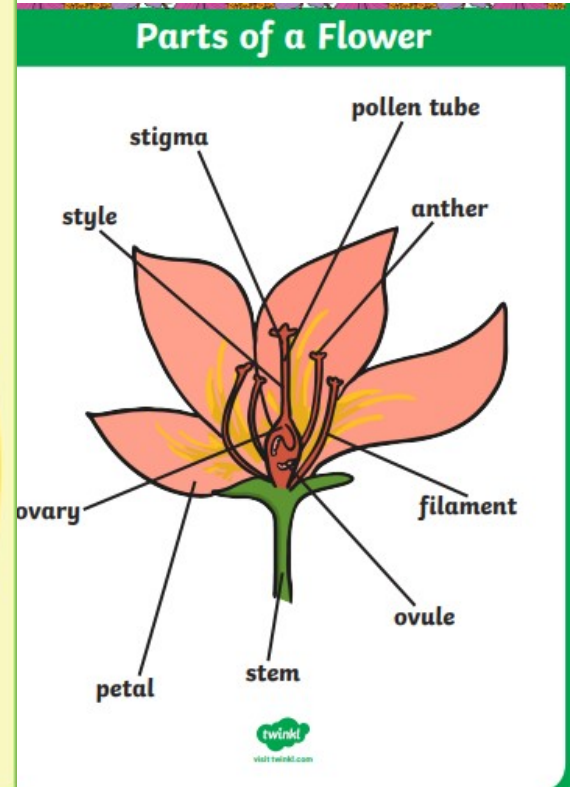
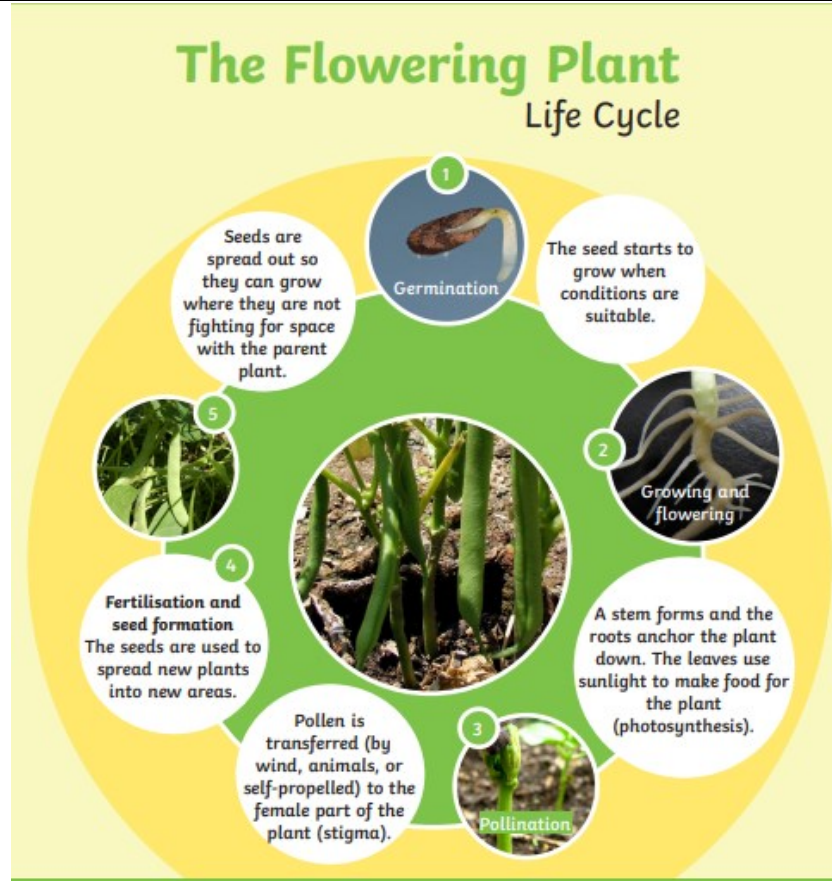


Key Vocabulary

Fertilise (fertilisation)	The action of fusing the male and female sex cells in order to develop an egg (or in plants, seeds)
reproduction	The process of new living things being made.
pollen	Powder formed in the anther of flowers.
pollination	The transfer of pollen to a stigma to allow fertilisation.
stamen	The male part of a flowering plant which contains the anther and filament.
anther	The part of a stamen that contains the pollen.
filament	The part of a stamen that holds up the anther.
carpel	The female part of the flower containing the stigma, style and ovary.
stigma	The part of the carpel which takes in pollen.



Most plants contain both the male sex cell (pollen) and female sex cell (ovules), but most plants can't **fertilise** themselves. Wind and insects help to transfer pollen to a different plant. The pollen from the stamen of one plant is transferred to the stigma of another. The pollen then travels down a tube through the style and fuses with an ovule. Some plants such as strawberry plants, potatoes, spider plants and daffodils can produce their own seeds and plants that are identical to the parent plant. This is called asexual reproduction.

